

PRINCIPAL'S NEWSLETTER – FRIDAY 10TH FEBRUARY 2023

Can you believe we are already halfway through the year? Since Christmas, there have been some great learning taking place in school ranging from our Chinese New Year celebrations to the Y5 Shakespeare performances. We have also had animals visiting Key Stage One, families attending our Books Over Breakfast event and children learning about how to support their mental health as well as how to stay safe online.

The children who have remained on green all half term were today treated to hot chocolate and biscuits for their Principal's Treat! Well done to all the children who have shown exceptional behaviours and represented our school values this half term.

We also launched our social media accounts, which can be accessed following the links below. Thank you to all the parents who took part in voting for the best Chinese dragon. We were blown away with the response and the competitive spirit and the post has currently been viewed over 34,000 times and received over 5,500 votes; including votes from Albania, the USA and even Australia! Congratulations to 5/6EH class who received over 520 votes!



[HolneChasePrimarySchool](https://www.instagram.com/HolneChasePrimarySchool)



[@HolneChasesch](https://twitter.com/@HolneChasesch)



[Holne Chase Primary](https://www.facebook.com/HolneChasePrimary)

Attendance

Your child's attendance in school is essential to support their academic progress and social development. Over the last few months, we have seen a dip in some of the children's attendance figures. We appreciate that during the winter, children catch illnesses and so sometimes require time off school. We are legally required to monitor attendance figures of all children; particularly when a child's attendance falls below the National target of 95%. Any child whose attendance falls below 90% is deemed a persistent absentee. If you receive a letter regarding your child's attendance, please book an appointment to arrange a meeting to discuss how we can support increasing your child's attendance.

We monitor the frequencies of lateness as this also has a detrimental impact on the academic progress of your child. We have seen an increase in the number of children arriving to school after the gates have closed. The classroom doors are opened at 8:40am, to ensure that lessons can start promptly at 8:50am. Please ensure that your child is on the school playground ready for 8:40am so that they can be ready for the school day to begin.

Even if your child is frequently 5 minutes late, this can equate to 25 minutes over a school week, which in turn can equate to 2.5 hours of missed learning over a six-week term. Therefore, it is vital that all children are punctual and in school to fully enhance their academic progress.

Below are the attendance figures for your child's class for this half term and the year to date. You can check your child's individual attendance figure via the Arbor App.

| Class | RMT | 1SSB | 2EC | 3LM | 4CB | 5AW | 5/6EH | 6FH | School | Target |
|--------------|-----|------|-----|-----|-----|-----|-------|-----|--------|--------|
| Spring Term | 94% | 92% | 98% | 97% | 93% | 95% | 92% | 98% | 95% | 95% |
| Autumn Term | 93% | 94% | 96% | 93% | 92% | 93% | 90% | 93% | 93% | 95% |
| Year to date | 93% | 94% | 96% | 94% | 92% | 94% | 90% | 95% | 94% | 95% |

Parents Evening

Parents Evening will take place on Monday 27th March (3:30pm – 7:30pm) and Wednesday 29th March (3:30pm – 5:30pm). Please book your 10-minute slot via the Arbor App. If you need any support with booking a time, please contact the school office.

Home Items in School

We are increasingly experiencing children bringing a range of toys and items into school from home. These have included fidget toys, slime, playground toys etc. This can cause issues amongst the children; children being upset when they get lost or broken and has also resulted in children refusing to put home items away in school. This impacts the learning taking place in school. Therefore, your child is not permitted to bring anything from home. Any equipment that your child requires in school is provided as part of the curriculum and therefore please ensure that any personal items are left at home. Any home items found in school will be confiscated and returned at the end of the day.

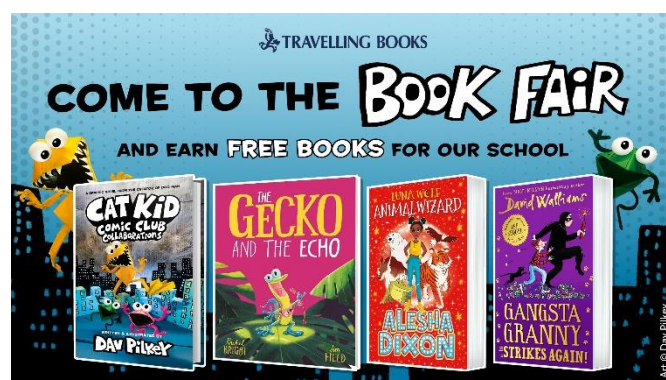
Uniform

A reminder that children should be coming into school in the correct uniform each day. On PE days, children should come to school in their PE kits. More information about our school uniform can be found on our [school website](#). Second hand uniform can be purchased from the office.

Book Fair: Monday 6th March – Thursday 9th March

As part of our World Book Day celebrations, we have organised a book fair to be in school from Monday 6th March – Thursday 9th March from 3:15pm each day. During that week, the book fair will be in the hall where you and your child can purchase any books from the wide selection available.

As a school, we earn a percentage of the money raised, which we can spend on books for our library so the more money raised, the more money we can spend on books. The event will be cashless; you will be able to pay for the books using a QR code that will be available on the day. We will send further information regarding payments once the payment system is open.



DATES FOR YOUR DIARY

| Event | | Date | Time |
|---|----------------------|---|-------------------|
| HALF TERM - Monday 13 th February – Friday 17 th February | | | |
| First Day of Spring 2 | | Monday 20 th February | 8:40am |
| World Book Day | Books Over Breakfast | Thursday 2 nd March | 8am |
| | Book Swap | | 3:15pm |
| Families in Partnership Event | | Monday 6 th March | 3:30pm |
| Book Fair | | Monday 6 th March – Thursday 9 th March | 3:15pm each day |
| Mother's Day Event | | Friday 17 th March | Details to follow |
| Parents Evening | | Monday 27 th March | 3:30pm – 7:30pm |
| | | Wednesday 29 th March | 3:30pm – 5:30pm |
| Last Day of Spring 2 | | Friday 31 st March | 3:30pm |