



Early Years

September 2024



Who's who?

- Principal: Mr David Killick
- Assistant Principal: Miss Amy Latham (Mrs Lloyd)
- Early Years Teacher: Miss Nicole Bray
- Teaching Assistants: Miss Jess Clark & Mrs Nicki Savill
- Family Support Worker: Miss Sarah McConnell



Fun, Creativity and Achievement

- Environment
- Learning Opportunities across the curriculum
- Creative Curriculum
- High Achievement in all areas



Areas of the Curriculum

- Prime Areas:
 - Communication and Language
 - Physical Development
 - Emotional and Social Development
- Specific Areas:
 - Literacy
 - Mathematics
 - Understanding of the World
 - Expressive Arts and Design



Reading in Early Years

- Essential Letters and Sounds
Phonics
- Reading Books
- Library Books
- School Events



What will my child be learning?

- Everyone's A Hero
- Tiptoe through the forest
- Across the Universe
- Magnificent Miracles
- Stomping through Time
- A Splash in the Ocean



A Typical School Day...

- Arrival – 8:40am
- Maths / English Input
- Phonics Lesson
- Lunchtime – 12pm
- Wider Curriculum Lesson
- Home Time – 3pm



Our School Values

- Responsibility
- Respect
- Resilience
- Positivity
- Empathy
- Aspiration



Behaviour at Holne Chase

- Good to be Green Behaviour System
- Class Rewards
- DoJo Rewards
- Golden Assemblies



Lunches

- All EYFS and KS1 (Year 1 & Year 2) entitled to free school meals
- Special Days
- Book on ParentPay
- Wristbands



Uniform

School

- Blue School logo jumper or cardigan
- White polo shirt
- Black or grey trousers
- Black or grey skirt
- Black/grey or white socks/tights
- Blue check dress (Summer)
- Black or grey shorts (Summer)
- Black shoes (not trainers)
- School logo bookbag
- Blue/Gold/Black hair bands/bobbles – no novelty items

PE Kit

- White t-shirt
- Black school logo PE hoodie or black jumper
- Black jogging bottoms
- Black shorts
- Black trainers

Communication

- Arbor App
- Emails every Friday
- InApp messages throughout the week
- Facebook Page
- Website - Diary



Pupil Premium

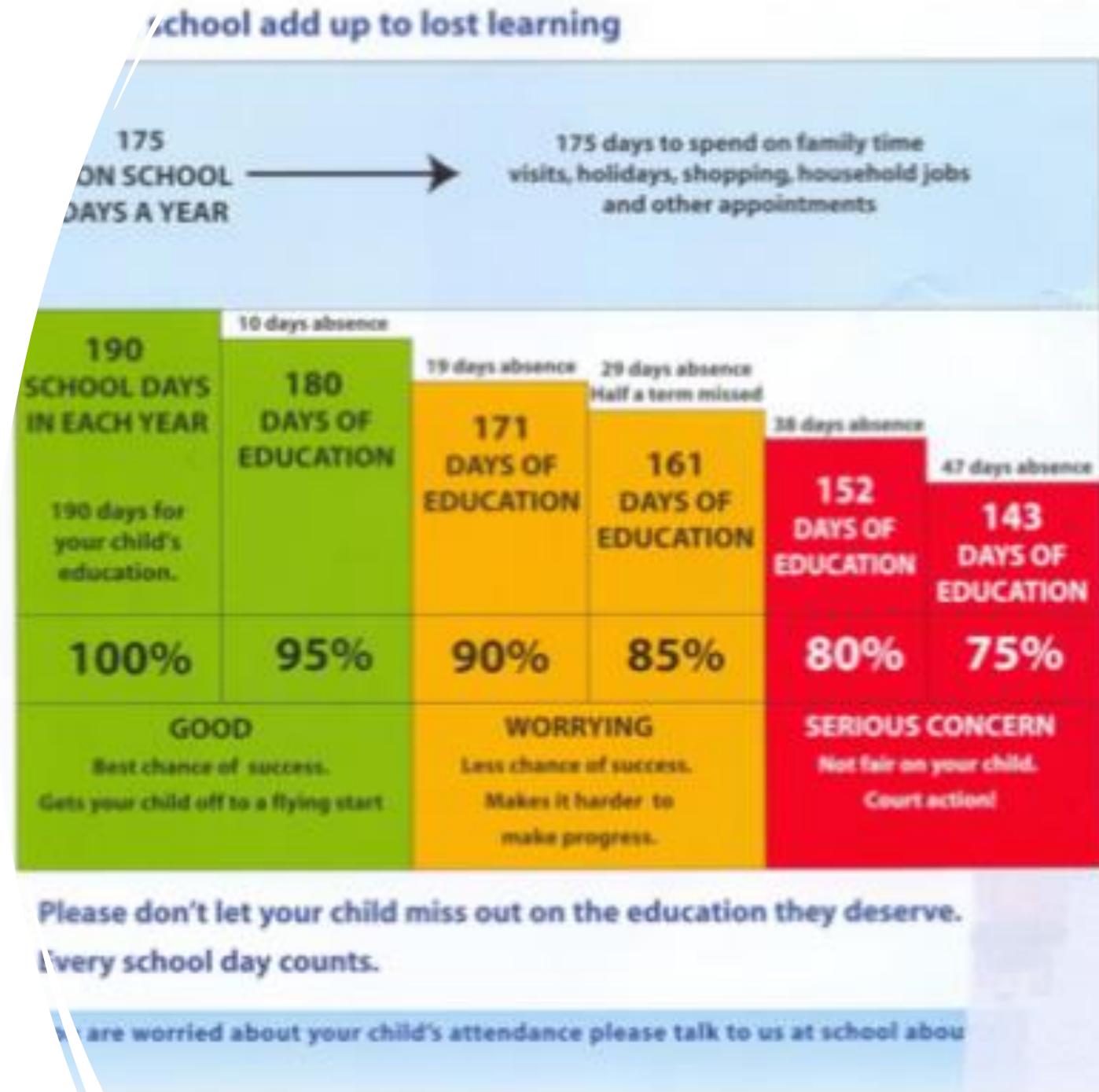
- Universal credit (provided you have a net income of £7400 or less)
- Income support
- Income-based jobseekers' allowance
- Income-related employment and support allowance
- Support under Part IV of the Immigration and Asylum Act 1999
- The guaranteed element of state pension credit
- Child tax credit, provided that you are not also entitled to working tax credit and have an annual gross income of £16,190 or less
- Children who are or have been in care, and children who have a parent who is or was in the armed forces, are also entitled to pupil premium.

Includes eligibility in the last 6 years



Attendance

- High attendance = 96% +
- Cause of concern = 91% - 95%
- Persistent Absentee = 90% and below
- New fines coming in 24/25



Dates for your diary...

- Stay and Play Sessions: Monday 1st July & Thursday 11th July: 9am – 11am
- Home Visits: Wednesday 4th September – Friday 6th September
- Part Time: Monday 9th September – Friday 13th September
- Full Time: Monday 16th September (8:40am – 3pm)



How you can get involved in the school...

- Friends of Holne Chase
- Families in Partnership
- Community Events and Celebrations



Things to do over the summer...

- Talk about school and be positive
- Encourage independence
- Get them into a routine
- Read lots of stories
- Practise counting, recognising their name



Any
questions?

